

HIGHLIGHTS

KATHMANDU

- Patan Durbar Square
- Kathmandu Durbar Square
- Swoyambhunath Stupa
- Pashupatinath Temple
- Boudhanath Stupa
- Thamel Street
- Farewell dinner with Nepalese Cultural Dance Show

POKHARA

- Sarankot Hill
- Davis Fall
- Tibetan Refugee camp
- Gupteswore Mohadev Cave
- Bendabashini Temple

CHITWAN

- Chitwan National Park
- Elephant Ride
- Canoe Ride
- Elephant Breeding Centre
- Local Tharu Cultural Show

LUMBINI

- Lumbini Garden
- Mayadevi Temple
- The Birth Marker Stone
- Ashok Pillar
- The Idol of Mayadevi
- The Holy Pushkini Pond
- The Eternal Peace Flame

DELICACIES

100% Full Board Meal

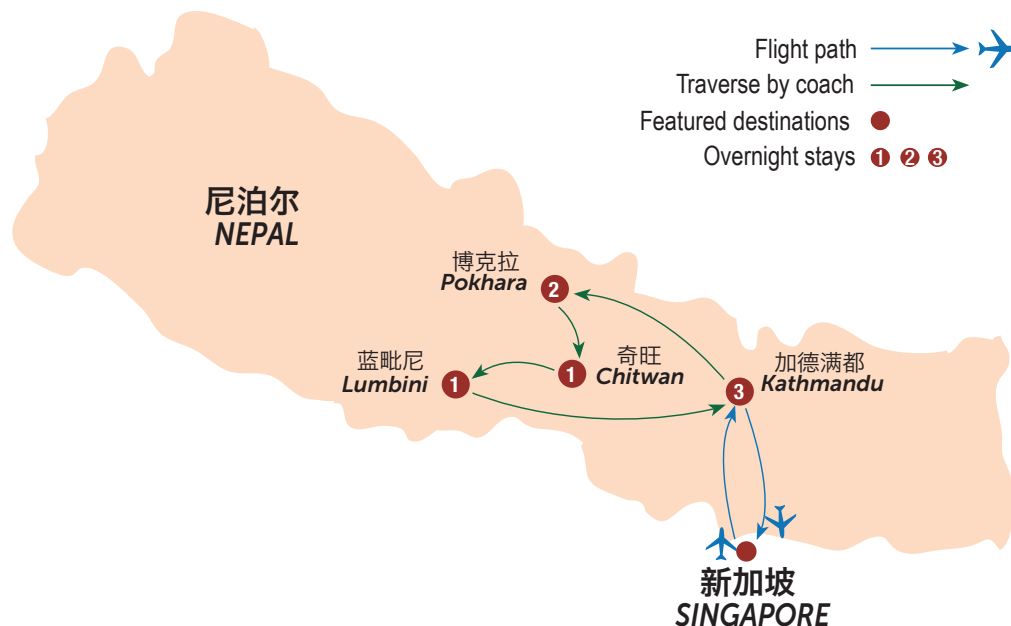
Meals:

- Traditional Nepali Cuisine
- Momo (Dumpling)

ACCOMMODATIONS

AS STATED OR SIMILAR - LOCAL 4★

- 1 night Center Park Chitwan
- 3 nights Soaltee Crowne Plaza Kathmandu
- 2 nights Atithi Resort & Spa Pokhara
- 1 night Buddha Maya Garden Lumbini



DAY 1 SINGAPORE → KATHMANDU (Lunch/Dinner)

Arrive Tribhuvan International Airport, meet and greet. Transfer out for Lunch at good Local Restaurant.

- **Patan Durbar Square** - The oldest of all three cities of Kathmandu valley. It is the best known for its artistic heritage. It is probably one of the oldest Buddhist cities in the world. The city is surrounded by 4 Stupas as 4 corners of Patan, one at each corner of its cardinal points. These Stupas are said to have been built by the famous Emperor Ashoka. Patan Durbar Square is the famous visiting place, with full of ancient palaces, temples and shrines noted for their exquisite carvings. The former Royal Palace complex is the centre of Patan's religious and social life and houses a museum containing an array of bronze statues and religious objects. The main attractions here are **Patan Museum, Hiranya Varna Mahavihar, Golden window, Golden temple, Krishna temple** etc. Most of the monuments around the Square were built by Malla Kings from 16th to 18th centuries. Check in at pre-booked Hotel in Kathmandu. Transfer out for dinner at Local Restaurant.

DAY 2 KATHMANDU (Breakfast/Lunch/Dinner) Breakfast in the Hotel.

- **Kathmandu Durbar Square** - also known as **Hanuman Dhoka Square**, one of the major attractions in Kathmandu valley. The name Hanuman Dhoka Durbar came from the statue of Hanuman (Monkey god) established by the King Pratap Malla at the entrance of the royal palace in 1672 AD. The whole complex is popularly known as Kathmandu Durbar Square, located at the heart of ancient city in Kathmandu. It is

surrounded by both Hindu and Buddhist temples. Most of them are built in the pagoda style embellished with intricately carved exteriors as well as most of the buildings. The Durbar Square, with its old temples, palaces, epitomises the religious and cultural life of the locals. The major interesting attractions here are Living Goddess Kumari house, Kasthamandup temple, Shiva Parvati temple, Kal Bhairav, Jagannath temple and Taleju temple. Some of the attractions here were destroyed by 25th April 2015 earthquake in Nepal. Those affected monuments are under renovation.

- **Swoyambhunath Stupa**, situated on the top of a hill, west of Kathmandu is one of the most popular holy and instantly recognisable symbols of Nepal. The temple is colloquially known as the monkey temple because of the large tribe of roving monkeys who guard the temple. This peaceful and calm hill commands the picturesque view of the Kathmandu valley and splendid panorama of Himalayan view. This Stupa is laden with 13 gold plated spires symbolizing 13 stages to salvation in Buddhism. Different sorts of Buddha has added to the attraction of the stupa.
- **Pashupatinath temple**. The temple is reserved as one of the most important pilgrimage sites for Hindu devotees all around the world. Wooden Sculptures, Statues and different carvings dedicated to the Hindu god, Shiva as well as other deities in the complex represent the temple's richness in art. The temple lies on the bank of the sacred Bagmati River while aryaghat, a place built for cremating the bodies of Hindus, also lies near. The sacred temple has been listed in the UNESCO's World heritage site. Non Hindus are strictly prohibited from entering the temple.
- **Boudhanath Stupa**. The Stupa is one of the important pilgrims for Buddhists. The Stupa is surrounded by one hundred and eight

8D7N EXPLORATION OF NEPAL WITH LUMBINI



small niches accommodating the icons of Buddhas, Bodhisattvas and other female deities. The serene environment in the surrounding of the Stupa has added to its attractions. Listed in the UNESCO's world heritage site, the huge sized stupa is one of the prime sites for tourists and pilgrims. Dinner at good Local Restaurant.

DAY 3 KATHMANDU ▶ POKHARA (Breakfast/Lunch/Dinner)

Breakfast in the Hotel.

- Check out- drive to Pokhara for 6/7 hours. Pokhara, situated at an altitude of 827 m west of Kathmandu valley, enchanting city with several beautiful lakes and offers stunning panoramic views of Himalayan peaks. The serenity of Lakes and the magnificence of the Himalayas rising behind them create an ambience of peace and magic. Rest of the day at leisure. Dinner and overnight.

DAY 4 POKHARA (Breakfast/Lunch/Dinner)

- **Sarankot hill** - famous for the view of sunrise and mountains. The stunning view of Pokhara valley, Hemja village, Phewa Lake, Talbarahi, The World Peace Pagoda and Lakeside from Sarankot mesmerises any living soul.
- **Davis fall**
- **Tibetan Refugee Camp**
- **Gupteswore Mahadev Cave**
- **Bendabashini temple**
- One hour boat rides in the **Phewa Lake**.
- Afternoon free at leisure or enjoy shopping around Lakeside street. Dinner and overnight.

DAY 5 POKHARA ▶ CHITWAN (Breakfast/Lunch/Dinner)

- **Chitwan National Park** - offers a multitude of activities suited for entertainment of the tourists. It is possible to observe different wild animals and birds in the natural forests of the Chitwan National Park.
- **Elephant ride in the jungle**
- **Canoe ride at Rapti River**
- **Elephant breeding centre.**
- Enjoy the sunset view from **Rapti river bank**
- **Local Tharu Cultural Show.** Dinner and overnight.

DAY 6 CHITWAN ▶ LUMBINI (Breakfast/Lunch/Dinner)

- **Lumbini** - the birthplace of Lord Buddha, the messenger of peace, is one of the holiest places on the earth. Lord Buddha's mother, Shakyha Queen Mayadevi, gave birth to prince Gautam inside this beautiful Lumbini Garden in 623 BC. She was on her way from her parent's home at Devdaha to her husband's home at Taulihawa. The temple dedicated to Mayadevi is the main attraction of Lumbini. Located beside the temple are the holy Pushkirmi Lake and the Ashok Pillar erected by Emperor Ashok of Magadh, India to mark the birthplace of Lord Buddha.
- **Lumbini Garden**- The major attractions here are The Mayadevi temple, the birth marker stone, the Ashok Pillar, the Idol of Mayadevi, the holy Pushkirmi Pond, the Eternal Peace flame and the numerous huge monasteries constructed by different countries are the major attractions of Lumbini. Lumbini has been listed in the UNESCO'S World Heritage sites in 1997 AD due to its religious importance and historical background. Dinner and overnight.

DAY 7 LUMBINI ▶ KATHMANDU (Breakfast/Lunch/Dinner)

Breakfast in the Hotel.

- Upon arrival in Kathmandu, you will be transferred to pre-booked hotel.
- **Thamel Street** - shopping hub in Kathmandu for tourists.
- **Farewell dinner with Nepalese Cultural show** at good Local Restaurant.

DAY 8 KATHMANDU ✈ SINGAPORE (Breakfast)

Breakfast in the Hotel.

Free until transfer to the airport for flight back to Singapore.

Important Remarks:

1. In the event of local religious festivals, unforeseen circumstances and/or bad weather condition, the sequence of the itinerary may be changed or substituted in by alternative sites without prior notice and/or at short notice in order to ensure smoother journey and tour.
2. Excludes tipping for Guide & Driver/Porter at USD8/ pax/day (Adult & Child).
3. Excludes tipping for Tour Leader at USD3/pax/day (Adult & Child).
4. Excludes luggage porter service, USD2/pax/day (Adult & Child).

